




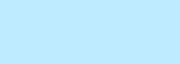






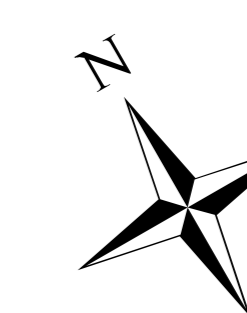
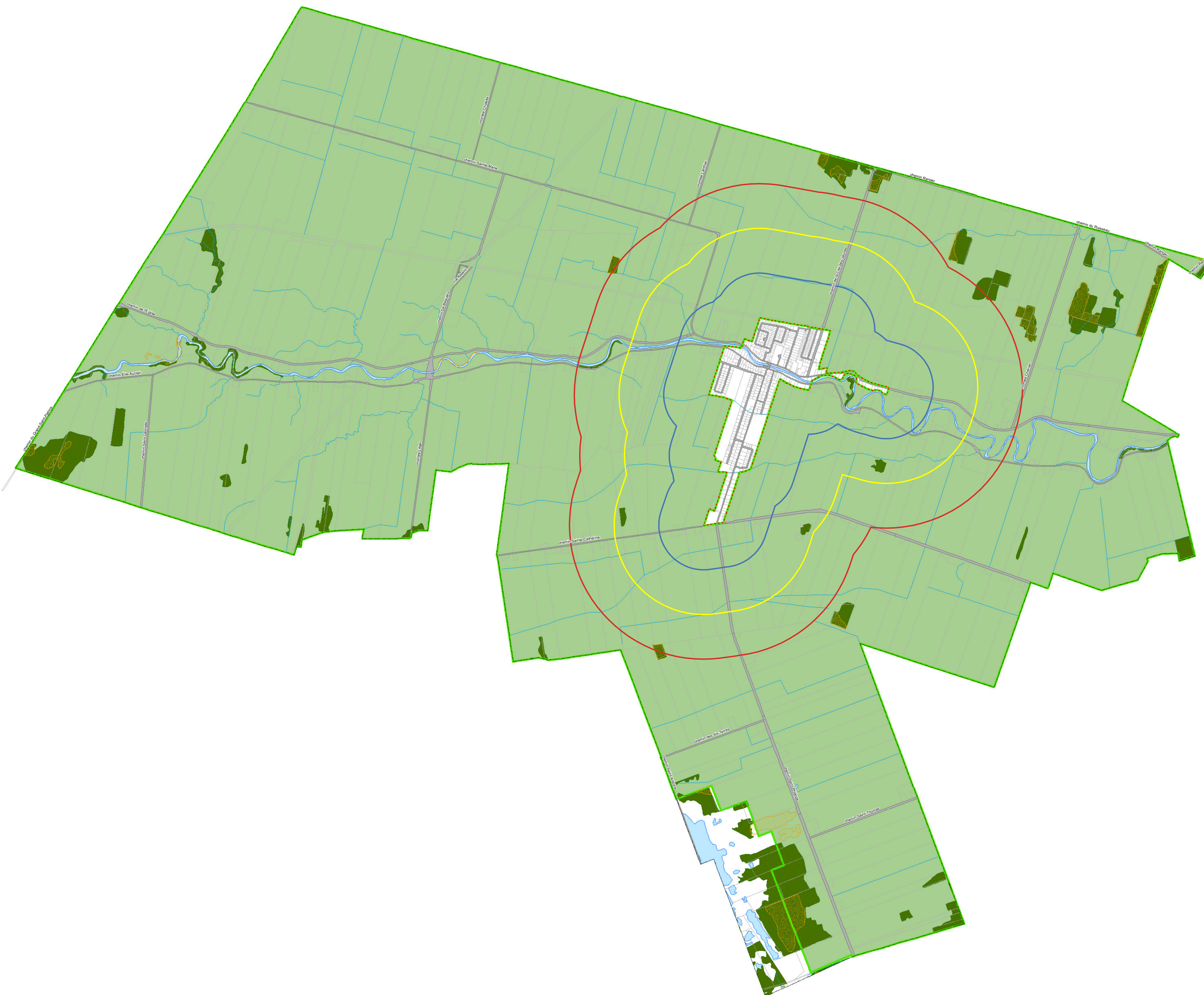
SAINT-POLYCARPE

ANNEXE C RÈGLEMENT 209-2025 - ZONAGE

Élevages et milieux naturels

Rayons de protection du périmètre urbain

-  500 m
-  1 km
-  1,5 km
-  Limite de la zone agricole
-  Contingentement – Élevage porcin
-  Milieu humide
-  Couvert forestier
-  Plan d'eau
-  Cours d'eau linéaire
-  Limite municipale
-  Périmètre urbain
-  Réseau routier
-  Unité d'évaluation



1:15 000

Réalisé par:



Philippe Meunier et Associée
Urbanisme et soutien municipal

Date: Mars 2025